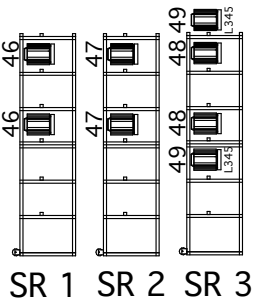
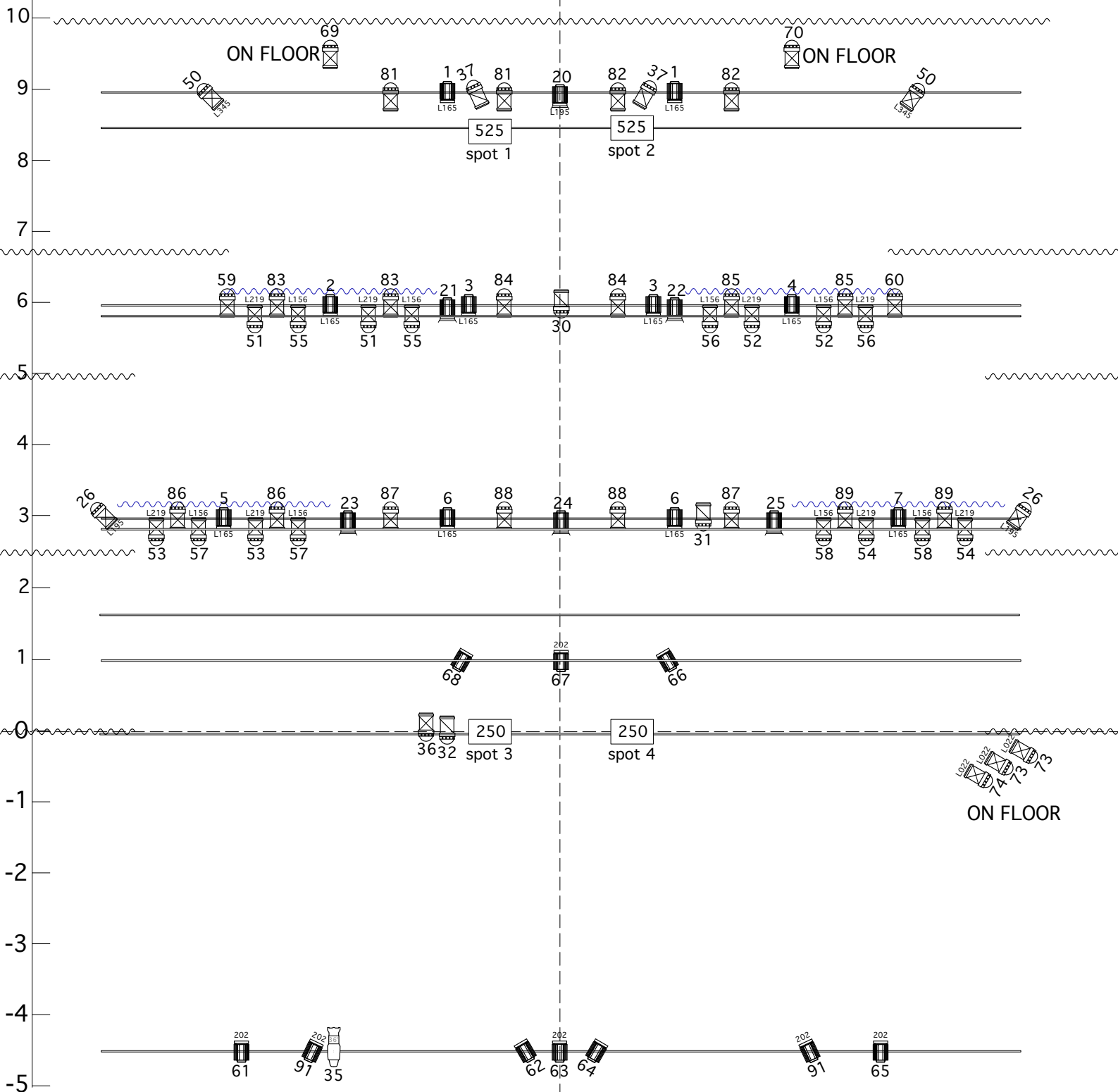


Czterdziesc Lighting Plan

Light design: Hans J. Skogen

hans@noncompany.no



KEY

- 36 x 1kw Fresnel/Pc
- 6 x 2kw Fresnel/Pc
- 1 x 750w 36* Profle
- 44 x Par64 cp 62
- 5 x Par64 cp 61
- 2 x Robe 250 Fresnel
- 2 x Robe 525 Fresnel

Paper walls (company brings)

