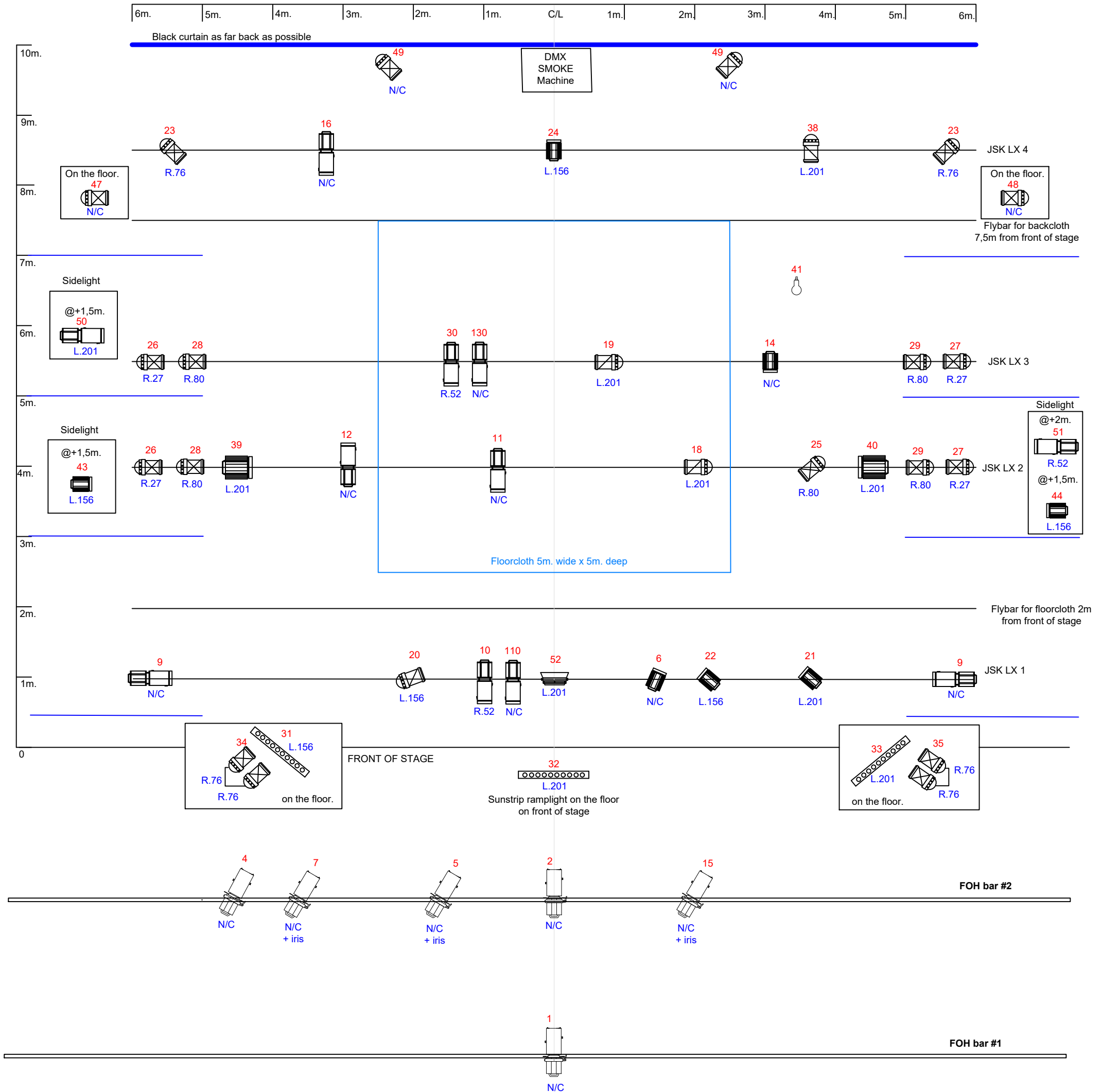


# Jo Strømgren Kompani "the Breakdown" Lighting Plan



- Lighting equipment needed:**
- 2kw. Fresnel x 2
  - 1kw. Fresnel x 7
  - CP62 Parcan x 19
  - 1kw narrow zoom Profile (eg RJ 611) x 6
  - CP61 Parcan x 4
  - 1kw medium zoom Profile (eg RJ 614) x 11
  - 1kw. Floodlight x 1
  - Sunstrip striplights on the floor x 3 (not LED)
- IMPORTANT:** We need a DMX controlled smoke machine on the floor at centre back
- 3 x lighting towers or stands. Lamps at around 1,5 and 2m height.
- 8 x Floorstands for Parcans, or these can be floorcans.
- 3 x iris for Profiles FOH.

Lighting design by:  
Stephen Rolfe  
+47 901 68 766  
stephenro@mailbox.org